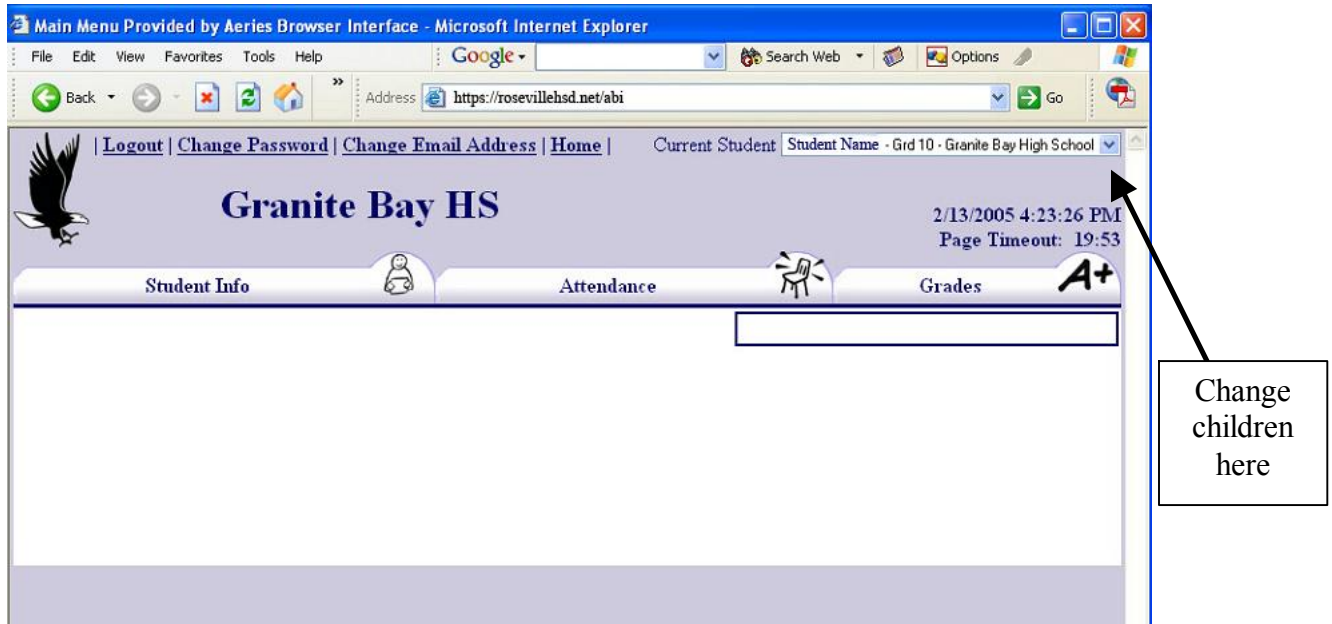


Navigating in HomeLink

When you open your account, you will see the following screen:



If you have multiple children enrolled in district schools, use the blue down arrow to change which child's information appears.

There are three tabs for accessing information:

Student Info

Demographics: address, phone, etc.

Class Schedule: course assignments for the year. F = fall semester, S = spring semester

Test Scores: record of all standardized test scores for your child, including the California High School Exit Exam, STAR scores, and the district writing benchmark assessment

Attendance

Includes absence and tardy information for the current school year.

Grades

Class Assignments: teachers' current gradebooks, includes grades in progress

Homework: work that has been assigned but is not yet due

Grades: grades from the most recent report card, either progress grades or final grades

Graduation Status: shows courses required for graduation and shows which have been completed

Transcripts: shows all courses completed and includes grade point average

To change which course is shown in the gradebook display, use the blue arrow to change classes.

Logout | Change Password | Change Email Address | Home | Current Student | Grd 11 - Oakmont High School

Oakmont HS

2/13/2005 4:38:32 PM
Page Timeout: 19:53

A+

Student Info Attendance Grades Graduation Status Transcripts

Class Assignments Homework Grades Graduation Status Transcripts

1 - H Chemistry- S 1/19/2005 - 4/8/2005 [Change Class](#) dHUDSON@rjUSD.k12.ca.us

		1 - H Chemistry - S			Tchr: Hudson D		Grd: 11	
#	Type	Description	Date Assigned	Score	Max	Date Completed	Date Due	Grading Complt
1	Hw/Wksht	Questionnaire		0	0	1/21/2005	1/21/2005	Yes
2	Hw/Wksht	Safety Contract		0	0	1/21/2005	1/21/2005	Yes
3	Hw/Wksht	Packet: Graphing			10		1/21/2005	Yes
4	Assessment	Quiz A		8	18	1/21/2005	1/21/2005	Yes
5	Hw/Wksht	Hw: Qs 8,9,11,12 p18, Qs 2-5 p129		5	5	1/25/2005	1/25/2005	Yes
6	Hw/Wksht	Hw: Qs 1,2 p29, Qs 3,5,11,20,23 pp44,45		5	5	1/26/2005	1/26/2005	Yes
7	Hw/Wksht	Wksht: Calculations Using Measurements		5	5	1/28/2005	1/28/2005	Yes
8	Hw/Wksht	Wksht: CH 2 Challenge Review		4	5	1/28/2005	1/28/2005	Yes
9	Assessment	Quiz B		9	20	1/28/2005	1/28/2005	Yes
10	EC	Ambigram		1	0	1/28/2005	1/28/2005	Yes

Change classes here